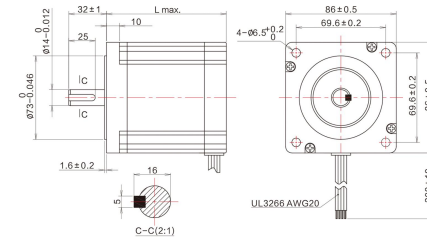


两相高性能混合式步进电机

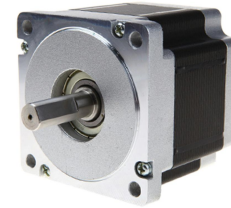
TWO PHASE STEPPING MOTORS

步距精度	温升	环境温度	绝缘电阻	耐压	径向跳动	轴向跳动
Step Angle Accuracy	Temperature Rise	Ambient Temperature	Insulation Resistance	Dielectric Strength	Shaft Radial Play	Shaft Axial Play
5%	80°C Max	-20°C ~ +50°C	100MΩ Min (500VDC)	500V AC 1 Minute	最大0.02mm (450g负载)	最大0.08mm (450g负载)

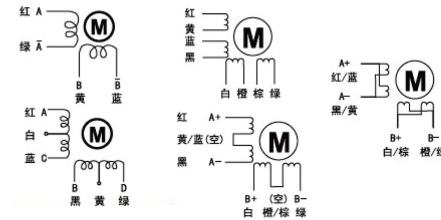
● 机械尺寸图/DIMENSION: UNIT=MM



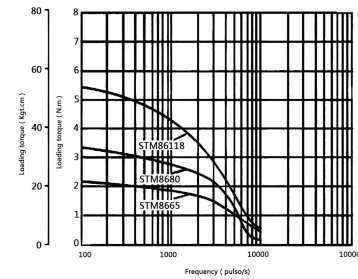
● 外观图/APPEARANCE



● 接线图/WIRING DIAGRAM



● 力矩曲线图/DYNAMIC TORQUE



● 技术参数/TECHNICAL SPECIFICATIONS

型号	机身长度	步距角	电压	额定电流	电阻	电感	保持转矩	转子惯量	重量	轴径	轴伸(轴长)	键槽	适配驱动器
Model	Length L (mm)	Step Angle (°)	Voltage (V)	Current (A/phase)	Resistance (Ω)	Inductance (mH)	Holding Torque (N.m)	Rotor Inertia (g.cm ²)	Weight (Kg)	Shaft Diameter (mm)	Axis Stretch (mm)	Key	Matching Driver
STM8665	65	1.8		4	1.3	3.2	3.3	1000	1.7	9.5	32	扁丝 25×1	STM258M STD2522M
STM8680	80			4	1.5	8.1	4.5	1400	2.3	12.7	32	扁丝 25×1	
STM86118	118			6	1.2	6.5	8	2700	3.8	12.7/14	38	5×5×25 (4线)	
STM86156	156			6	1.8	8.7	12	4000	5.3	15.875/14	34	5×5×25 (4线)	

备注：以上为常规性产品，轴径、轴长以及不同轴产品可根据客户需求定制。