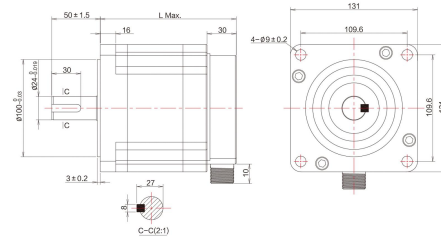


三相高性能混合式步进电机

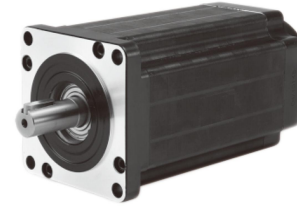
THREE PHASE STEPPING MOTORS

步距精度	温升	环境温度	绝缘电阻	耐压	径向跳动	轴向跳动
Step Angle Accuracy	Temperature Rise	Ambient Temperature	Insulation Resistance	Dielectric Strength	Shaft Radial Play	Shaft Axial Play
5%	80°C Max	-20°C ~ +50°C	100MΩ Min (500VDC)	500V AC 1 Minute	最大0.06mm (450g负载)	最大0.08mm (450g负载)

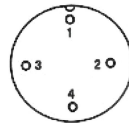
● 机械尺寸图/DIMENSION: UNIT=MM



● 外观图/APPEARANCE

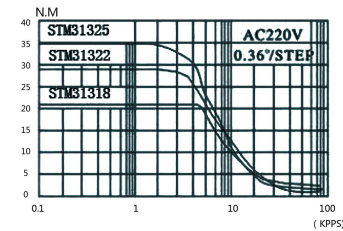


● 接线图/WIRING DIAGRAM



序号 serial number	1	2	3	4	备注 remarks
相序 phase sequence	U	V	W	GND	四芯插座 four-core socket

● 力矩曲线图/DYNAMIC TORQUE



● 技术参数/TECHNICAL SPECIFICATIONS

型号 Model	机身长度 Length L (mm)	步距角 Step Angle (°)	额定电流 Current (A/phase)	电阻 Resistanc e (Ω)	电感 Inductanc e (mH)	保持转矩 Holding Torque (N.m)	转子惯量 Rotor Inertia (g.cm ²)	重量 Weight (Kg)	轴径 Shaft Diameter (mm)	轴伸(轴长) Axis Stretch (mm)	键槽	适配驱动器 Matching Driver
STM31318	190	1.2°	6.9	0.72	4.7	20	26700	14.1	24	50	8×8×30	STD3722L
STM31322	222		6.9	0.95	6.1	28	33970	17.2	24	50	8×8×30	
STM31325	254		6.9	1.1	7.4	35	41240	19.8	24	50	8×8×30	
STM31332	318		6.9	1.4	9.82	50	55780	26	24	50	8×8×30	

备注：以上为常规性产品，轴径、轴长以及不同轴产品可根据客户需求定制。